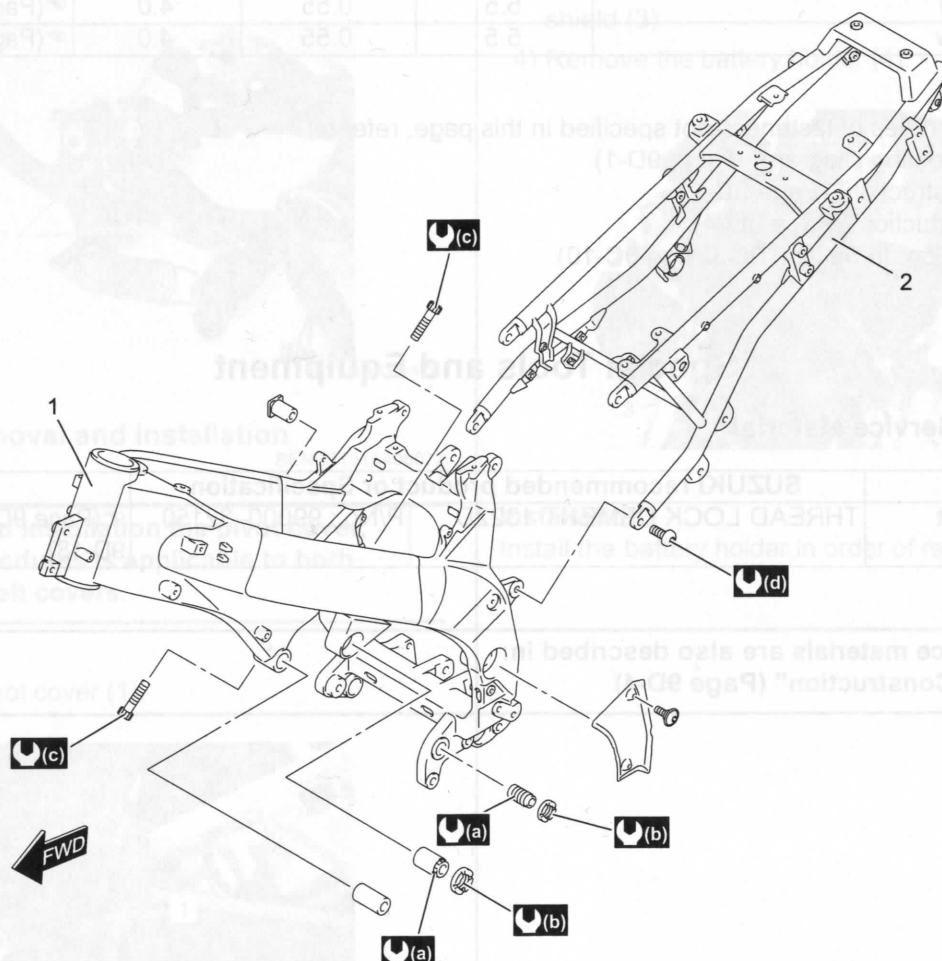


# Body Structure

## Repair Instructions

### Frame Construction

BENE31J19506001



IE31J1950004-01

1. Frame	(a) : 12 N·m (1.2 kgf-m, 9.0 lbf-ft)	(c) : 23 N·m (2.3 kgf-m, 17.0 lbf-ft)
2. Seat rail	(b) : 45 N·m (4.5 kgf-m, 32.5 lbf-ft)	(d) : 50 N·m (5.0 kgf-m, 36.5 lbf-ft)

### Seat Rail Removal and Installation

BENE31J19506014

Refer to "Frame Construction" (Page 9E-1).